

# Center Schools PK-12 Facility

Progress Report

2-21-2011

# What Was Sold to the Community

## Problems

- Multiple buildings with many security issues
  - Lack of connections between buildings
  - Site security issues without fencing and gates
  - Five unsecured entries
- Three high-voltage transformers are on ground level
- No fire-sprinkler system
- Failing ventilation, plumbing, and electrical systems
- Inadequate structural integrity, roof can only support 50% of required snow loads
- Haskin is beyond its useful life to make renovations viable and meet 21st century learning requirements

## BEST Solution

### A yes vote on 3A will provide:

- New PK-12 School with community library
- Renovations to current south high school wing, gym, and wrestling room
- Improving the site flow and parking
- Demolition of Haskin Elementary School, middle school and original high school
- Academic Recovery Center (ARC) will relocate from modulars into the west wing of the current high school

## Center Consolidated School District 26JT

### “Once in a Lifetime” Financial Opportunity!

The Center community has an opportunity to take advantage of State facility funding provided by the **BEST** Program (Build Excellent Schools Today)



### Educational & Safety Benefits:

- 21st Century learning environment - spaces designed for the needs of current and future students
- Daylighting for increased learning and energy savings
- Overall Campus Safety and Security will be improved
- Quality sound isolation for increased learning
- Adequate fresh air for improved attention and attendance

### Cost Savings:

- 8% cost saving build new vs. renovation of existing
- Significantly reduce gas and electric utility costs
- Reduce maintenance and repair costs
- High-performance utility operation that meets LEED Gold standards



**NEENAN**  
architecture®

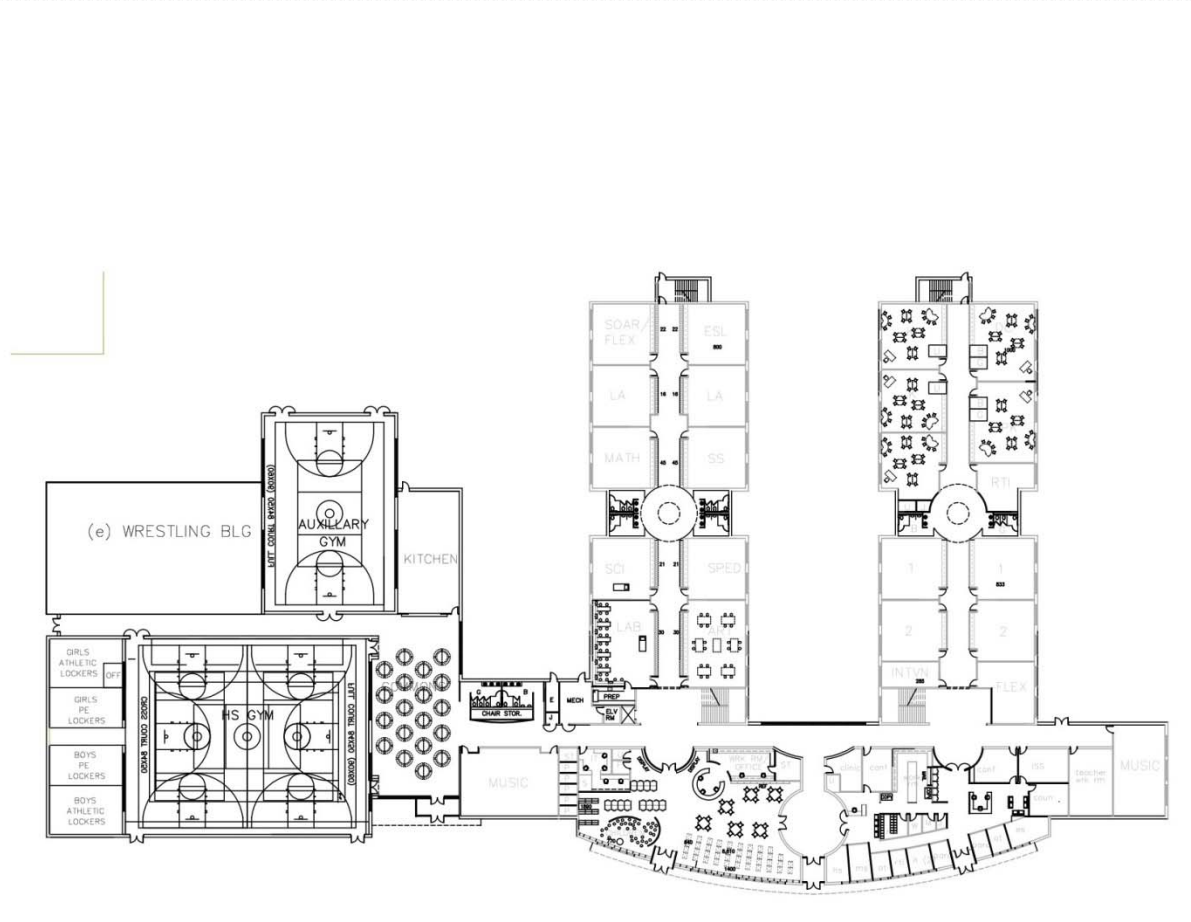
# Why We Picked GE Johnson

The difference in cost of construction between the Neenan and GE Johnson/Klipp bids was nearly 1 million dollars...meaning we would have received nearly 1 million dollars less “building” with Neenan than with GE Johnson/Klipp

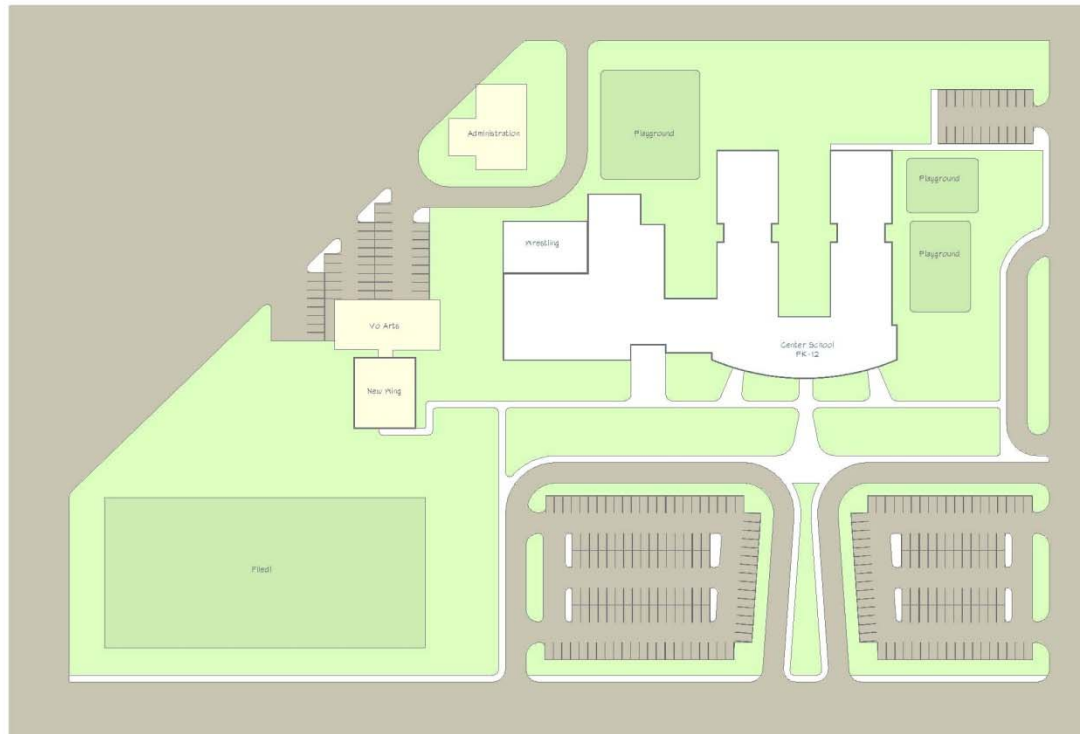
# The Original Neenan Design



# The Neenan Floor Plan



# The Neenan Site Plan





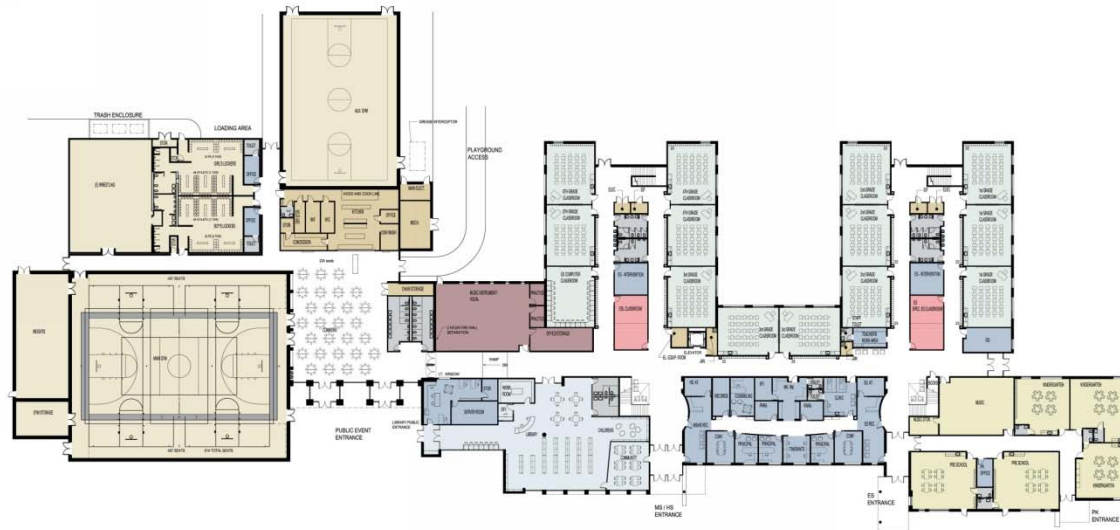
# Remember!

We created the original floor plan and building design during a 3 week period in January/February 2010. The purpose of this plan was to make sure we had all the class space we need, estimate the cost of a building and to win a BEST Grant.

# After Choosing a Builder

We have now had ample time to carefully plan the layout of our building to meet our needs from the inside. In doing so we have arrived at a possible design that is similar to what Neenan proposed, but quite different in several ways.

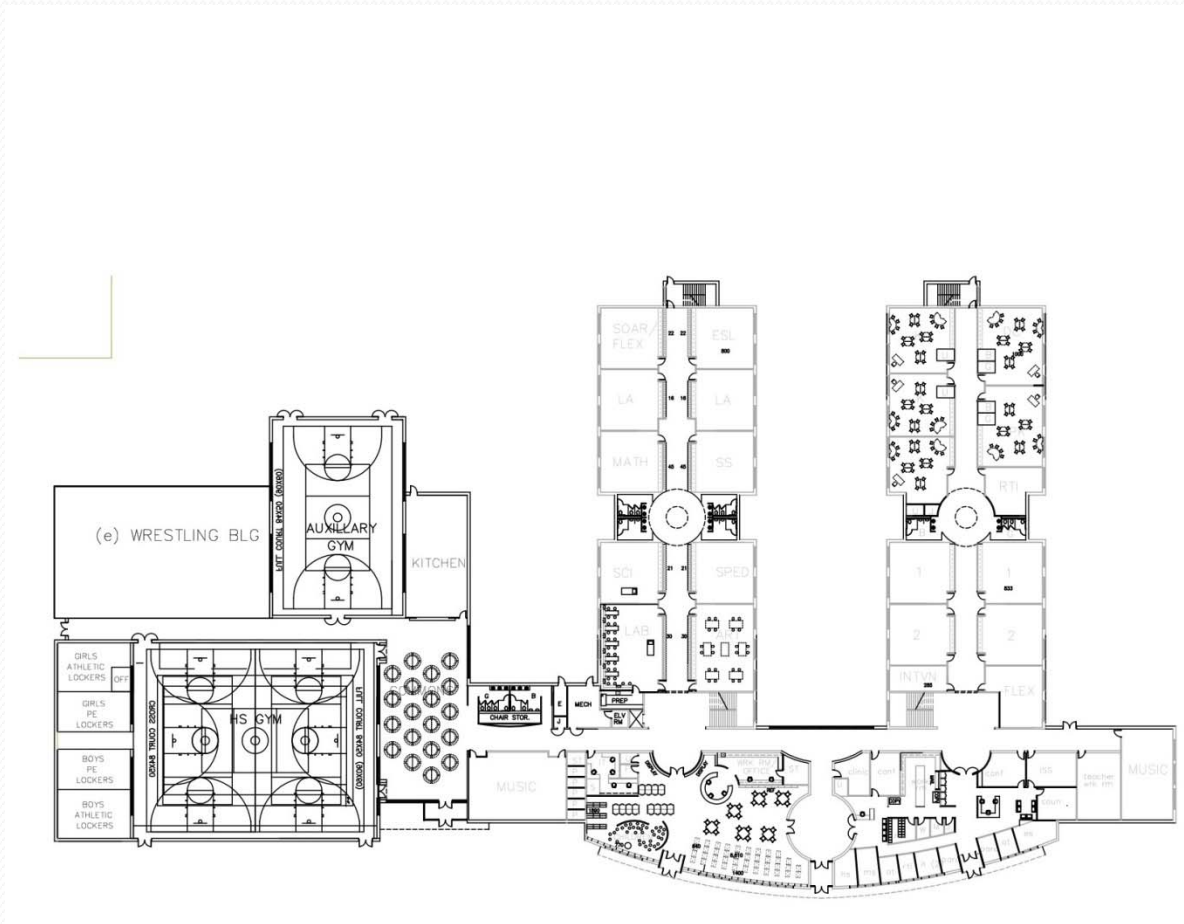
# GE Johnson/Klipp Floor Plan



1ST FLOOR PLAN  
02.09.11

1ST FLOOR PLAN | CENTER PK-12 SCHOOL | 02.09.11

# Compare the Difference

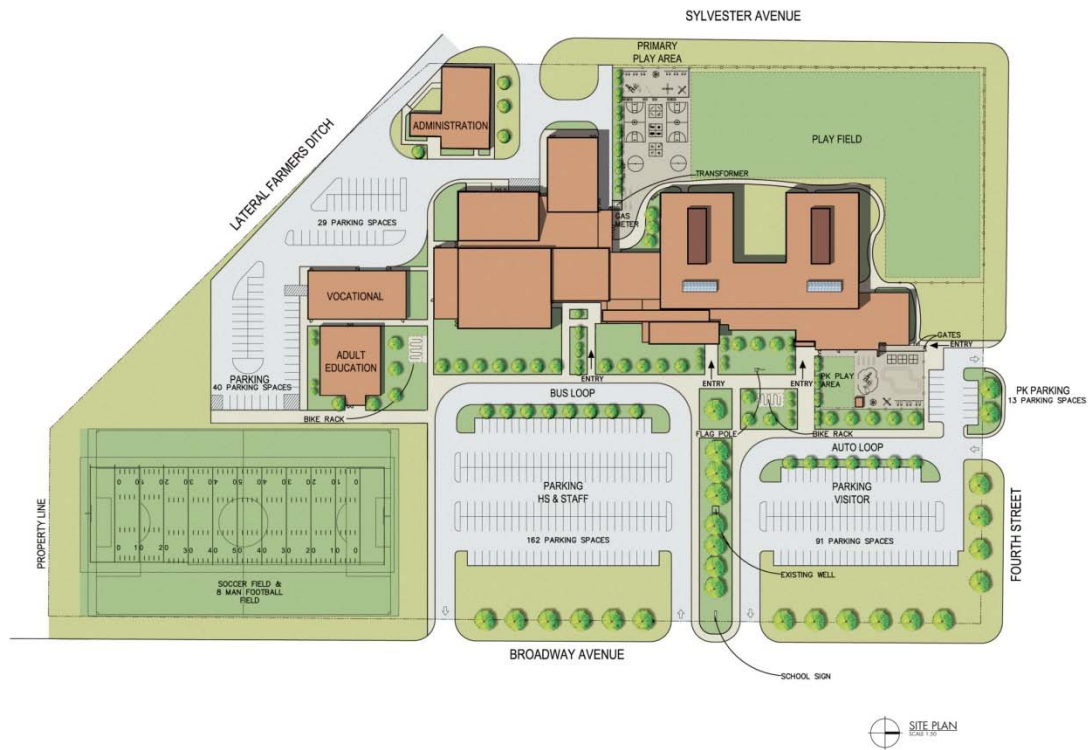


# GE Johnson/Klipp 2<sup>nd</sup> Floor

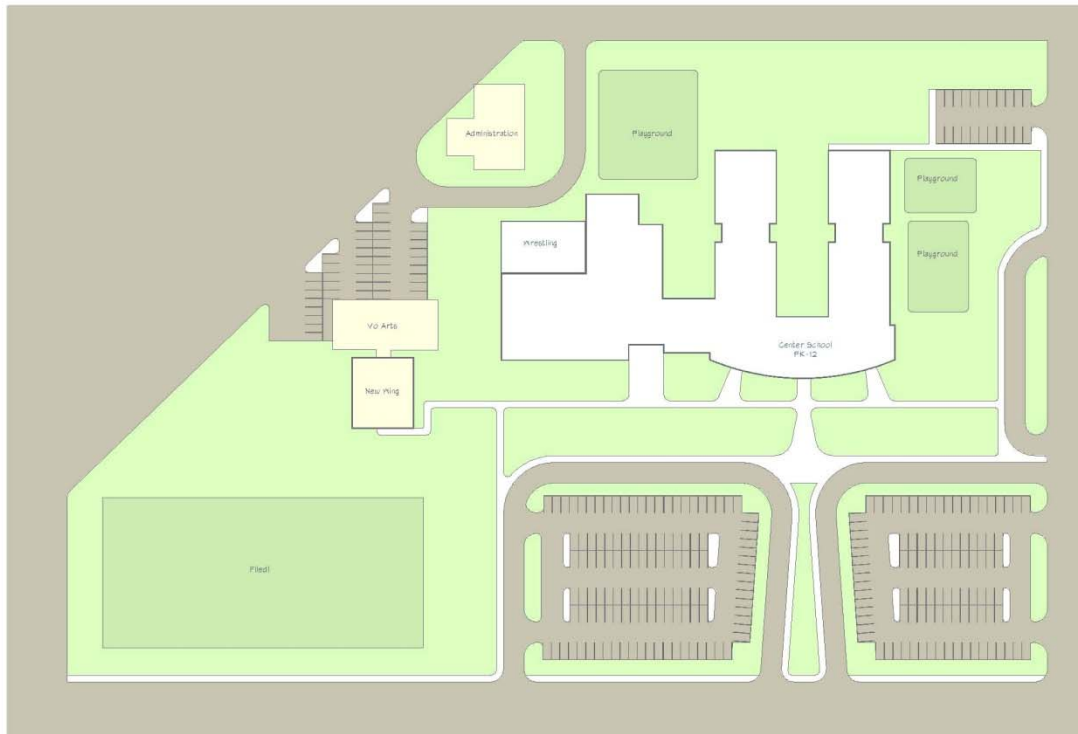


2ND FLOOR PLAN  
SCALE: 1/8" = 1'-0"  
0 10 20

# GE Johnson Site Plan



# Compare the Difference



# GE Johnson/Klipp Site Plan

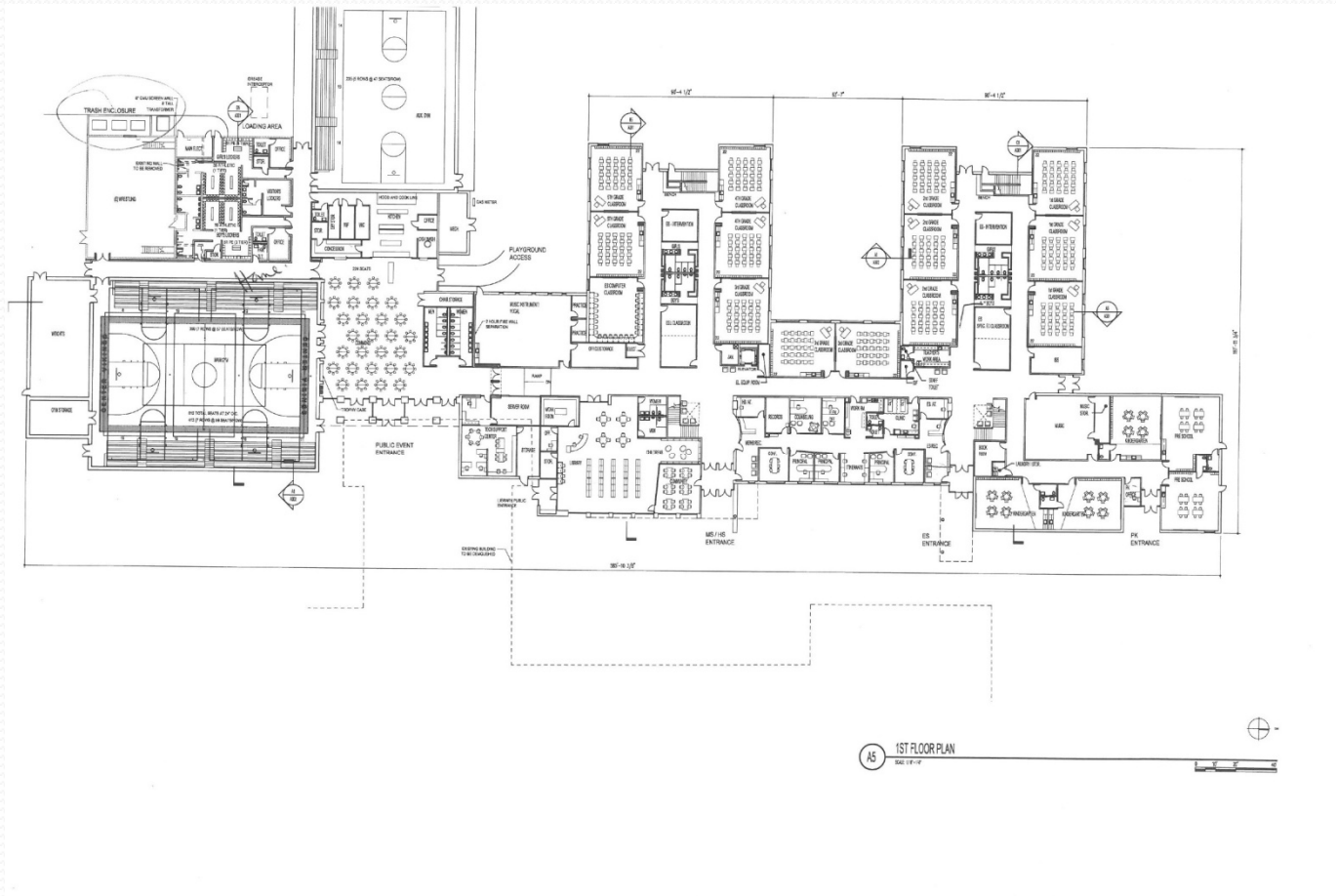
## Bird's Eye View



# GE Johnson/Klipp Possible Front View



# Actual Floor Plan as of 2-15-11



# Actual 2<sup>nd</sup> Floor Plan as of 2-15-11

